



**EcoBOSS™ 100% Positive Seal Pneumatic Blast Gates** are an essential energy saving component for all dust collection and air handling systems.

Installing EcoBOSS™ Gates that are directly connected to dust producing machinery is **ENERGY SMART!** When a dust producing machine is not in operation, airflow is not required. Power consumption is dramatically reduced, service life and capacity of a filtration system is increased, and the dBA levels of the fan's exhaust will be significantly lower.

EcoBOSS™ Gates are used to independently control airflow on specific machines by linking their open/closed position to the active operation of the individual machines that require dust collection or ventilation.

Optimum energy savings and filter capacity utilization will be achieved by installing the EcoBoss energy management system with EcoBOSS™ 100% positive seal pneumatic blast gates.

## Standard Features

- Heavy duty galvanized steel construction.
- 24 VDC solenoid with LED indicator light (110 VAC is optional).
- Sizes 4" – 12" come standard with 90° flared ends for use with optional quick connection clamps and adapters.
- Sizes 14" – 32" HD Gates come standard with flanged ends and co-flanges.
- Polyethylene gasket for 100% positive seal on sizes 4" – 12". Larger HD Gates utilize brass for ease of movement and feature rubber and felt gasket. All HD Gates are self cleaning.

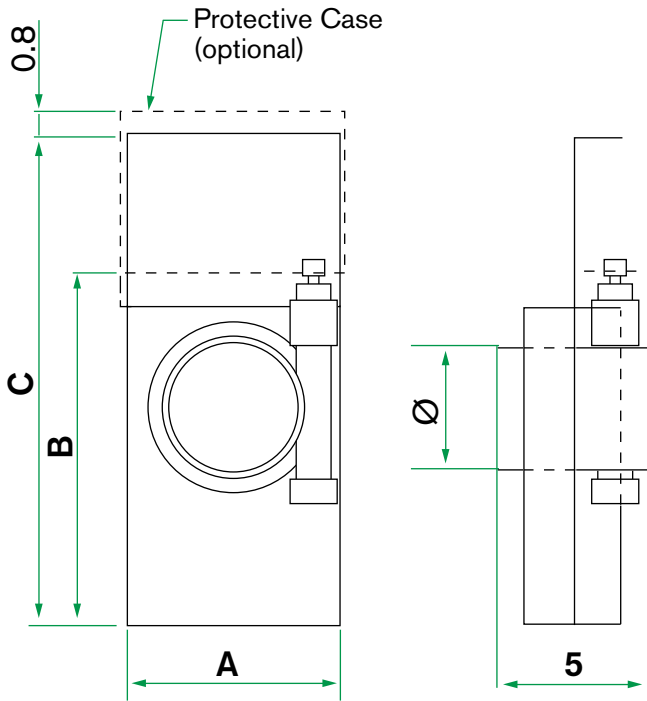
## Available Options

- **EB-ABG-PC00 – Protective Case**  
Sizes 4" - 12", standard on all larger HD Gates.
- **O-EB-ABG-SV110 –**  
110VAC Solenoid for direct power from machine tool.
- **EB-MPK01 & EB-MPK02 –**  
Transformer panels with plug for use with low voltage sensors on stand-alone applications. Models with delay timers and override switches are available.
- **Pneumatic Distribution & Wiring Solutions**
- **Comprehensive EcoBOSS™ Energy Control Systems**



*Close up of EcoBOSS™ Automatic Blast Gate.*

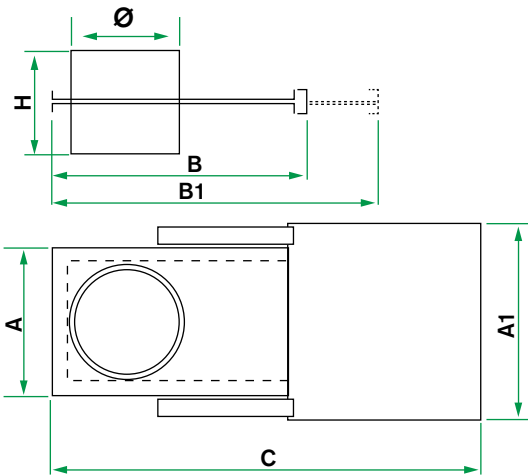
# AUTOMATIC BLAST GATES (EB-ABG00) DIMENSIONS (sizes 4" - 12")



| Ø   | A    | B    | C    | # of Cylinders |
|-----|------|------|------|----------------|
| 4"  | 7    | 11.4 | 15.7 | 1              |
| 5"  | 7.8  | 12.9 | 18.1 | 1              |
| 6"  | 9    | 15.3 | 21.2 | 1              |
| 8"  | 11   | 19.2 | 27.5 | 2              |
| 10" | 12.9 | 23.2 | 33   | 2              |
| 12" | 14.9 | 27.1 | 38.9 | 2              |



# HEAVY DUTY AUTOMATIC BLAST GATES (EB-ABG00HD) DIMENSIONS (sizes 14" - 32")



| Ø   | A    | A1   | B    | B1   | H    | C    | # of Cylinders |
|-----|------|------|------|------|------|------|----------------|
| 14" | 18.5 | 23.6 | 31.1 | 44.4 | 11.4 | 47.4 | 2              |
| 16" | 20.4 | 25.5 | 31.1 | 46.4 | 11.4 | 49.4 | 2              |
| 18" | 22.4 | 27.5 | 35   | 52.3 | 11.4 | 55.3 | 2              |
| 20" | 24.4 | 29.5 | 35   | 54.3 | 11.4 | 57.3 | 2              |
| 22" | 26.3 | 32   | 38.9 | 60.2 | 11.4 | 65.1 | 2              |
| 24" | 28.3 | 34   | 38.9 | 62.2 | 11.4 | 65.1 | 2              |
| 26" | 30.3 | 35.9 | 42.9 | 68.1 | 11.4 | 71.1 | 2              |
| 28" | 32.2 | 37.9 | 42.9 | 70   | 11.4 | 73   | 2              |
| 30" | 34.2 | 41.1 | 46.8 | 75.9 | 11.4 | 78.9 | 2              |
| 32" | 36.2 | 43   | 46.8 | 77.9 | 11.4 | 80.9 | 2              |

\*NOTE: All 'HD' GATES are provided in metric diameters with co-flanges for use with imperial diameters listed.

**SS304 AND SS316 CONSTRUCTION ARE AVAILABLE FOR ALL SIZES ON REQUEST**

