



Fred JR
with 10' capture arm
1200 - 1800 CFM

Fred ^{JR} **FUME EXTRACTOR**

Portable Smoke, Dust & Fume Extractor

Keeping your worker's breathing zone safe requires a capture-at-source extractor they will actually use. Designed to be moved and positioned effortlessly, the Fred JR excels at removing weld fumes, dusts, and other airborne contaminants as small as 0.5 micron with our MERV 15 rated Nanofiber filter.

The capture arm's external articulation is key to easy positioning, as smoke and dust passes through the machine without contacting the swivel and pivot points of the arm. The high suction and capture velocity developed by the Fred JR allows operators to capture and filter dust and fumes further away from the hood than competitive models.

Benefits:

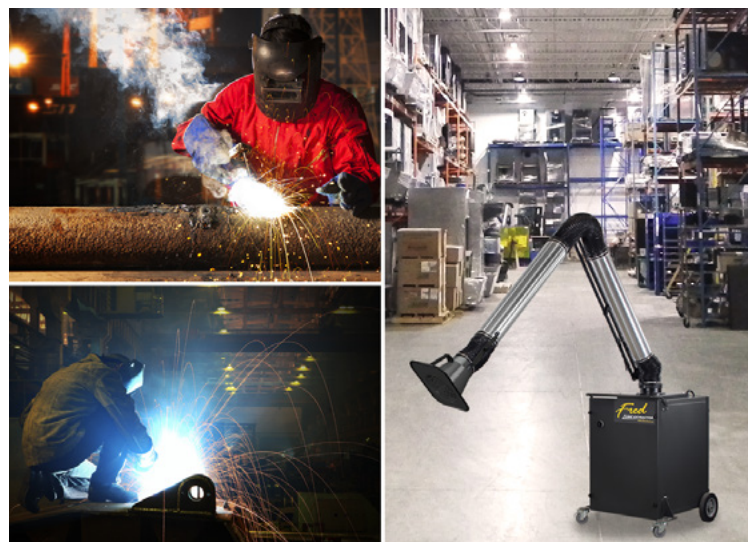
- Compact, portable, 120 volt, single phase
- Capture-at-source for cleaner air
- Complies with OSHA guidelines for controlling weld fumes

Features:

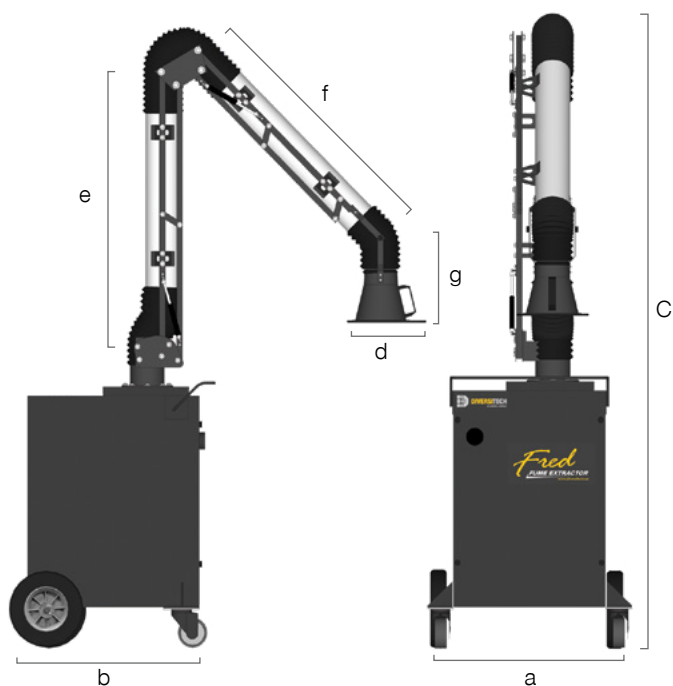
- Flexible 10' externally articulated capture arm
- 1.5HP TEFC motor producing 1200 CFM at the hood.
- 26" easy-to-service Nanofiber filter (MERV 15)
- Rotary starter with 15' power cord & casters

Options:

- Flexible externally articulated capture arm 6.5', 10', or 13'
- Automatic self-positioning, Fume Tracker™ capture arm
- 3.0 HP 1800 CFM High-Static Motor [230/460/575V 3PH]
- Odor Absorption Kits
- Minihelic Gauge
- Spunbond Polyester Filter Cartridge (washable)
- After-filter module, with HEPA Filter
- Hood mounted LED light kit



WELDING • GRINDING • SANDING • DEBURRING



NANOTECH XV



MERV 15 efficient cartridge filter captures particles at the submicron level, and surface-loading technology allows dust to be easily dislodged during cleaning with compressed air.

EFFICIENCY:	MERV 15
FILTER MEDIA:	NANOFIBER
MEDIA AREA:	320 SQ.FT.
COATING:	FIRE RETARDANT
END CAP:	OPEN/CLOSED
CLEANING METHOD:	COMPRESSED AIR
MAX TEMP:	180° F / 82° C
FLANGE:	NONE

POLYTECH XI



High strength, high efficiency (MERV 11) cartridge filter made from 100% spun-bond polyester that lowers costs, by allowing for water-based cleaning of captured contaminants.

EFFICIENCY:	MERV 11
FILTER MEDIA:	SPUN-BOND POLY
MEDIA AREA:	169 SQ.FT.
COATING:	FIRE RETARDANT
END CAP:	OPEN/CLOSED
CLEANING METHOD:	AIR + WATER WASH
MAX TEMP:	180° F / 82° C
FLANGE:	NONE

Technical Specifications

Model	Motor (H.P.)	Power					Airflow (CFM)	Cord	Arm
		Phase (hz)	@120V (amps)	@230V (amps)	@460V (amps)	@575V (amps)		Length (ft.)	Length (ft.)
FRED-JR with externally articulated manual capture arm									
FRED-JR	1.5	1P/60Hz	13.2	---	---	---	1200	15	10/13
	3.0	3P/60Hz	---	7.1	3.7	3.2	1800	---	10/13

Dimensions

Model	Arm Length (ft.)	Arm Diameter (in.)	Net Weight (lbs.)	Product Dimensions (in.)							Shipping Dimensions (in.)			Gross Weight (lbs.)
				Width [a]	Height [C]	Length [b]	[d]	[e]	[f]	[g]	Width	Height	Length	
FRED-JR with externally articulated manual capture arm														
FRED-JR	10	6	287	32.5	115	33	13	60	34	18.5	41	80	50	337
	13	6	292	32.5	128	33	13	60	60	18.5	41	80	50	342

HEAD OFFICE
 1200 55th Avenue
 Montreal, QC H8T 3J8

CANADA
 Montreal, QC
 Toronto, ON



Total Air/Energy SOLUTIONS
 Technology • Efficiency • Performance



Sales@TotalAirEnergy.com
 www.TotalAirEnergy.com
 Phone 206.454.7070
 Fax 206.892.9644
 727 S. Kenyon St., Seattle, WA 98108