

SUCTION AND VENTILATING HOSE FOR CORROSIVE MEDIA UP TO +350°F

Master-Clip PTFE-H-EC

Material

Hose wall double layer:

Inner layer: PTFE-film, electrically conductive

Outer layer: Hypalon®-coated polyester fabric

External helix: galvanized steel

Applications

- Dangerous areas, where electrical conductivity is demanded
- Pharmaceutical industry
- Chemical industry
- Paint, wood, and paper industries
- Extraction of corrosive media, explosive gases and vapors
- Under increased mechanical performance
- Solvent extraction
- Low pressure applications
- Areas with raised safety requirements
- Ventilation and suction in accordance with safety requirements

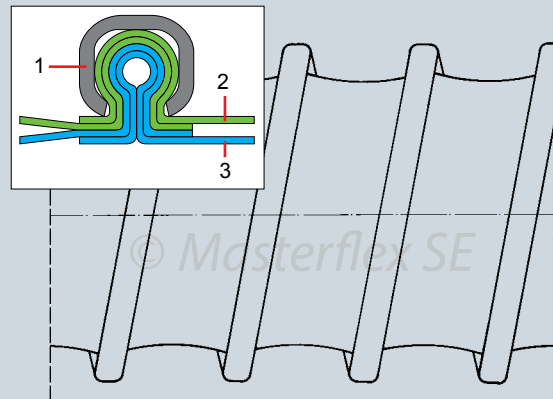
Properties

- **Surface resistance $R_o < 10^6$ Ohm**
- **Electrically conductive**
- Excellent chemical resistance
- PTFE: harmless to health
- Excellent weather resistance
- High temperature and cold resistant
- Highly flexible
- Extreme compressibility 1:4
- Small bend radius
- Vibration-proof
- Extra strength outer hose wall
- Inner wall with non-stick surface
- Excellent flex fatigue resistance
- Good tear strength
- Good UV/ozone resistance
- Optimum flow characteristics
- External steel helix protects against abrasion
- Special clamping method guarantees high tensile strength between hose material and external helix



Construction

1. External helix
2. Outer layer: Hypalon®-coated polyester fabric
3. Inner layer: PTFE-film, electrically conductive



Temperature Range

- -40°F up to +350°F
- Intermittent to +375°F

Chem. Resistance

- See resistance table

Master-Clip PTFE-H-EC

Dia (in.)	Positive (in. w.c.)	Negative (in. w.c.)	*Bending radius (in.)	Weight (lbs./ft.)	Product Code
2.60	273	104	1.56	0.4697	261-065-107
2.80	269	90	1.68	0.4697	261-070-107
3.00	249	78	1.80	0.5368	261-075-107
3.20	245	69	1.92	0.5368	261-080-107
3.60	225	54	2.16	0.6039	261-090-107
4.00	205	44	2.40	0.6710	261-100-107
4.40	193	37	2.64	0.7381	261-110-107
4.80	145	31	2.88	0.7381	261-120-107
5.00	133	28	3.00	0.8052	261-125-107
5.20	113	26	3.12	0.8052	261-130-107
5.60	100	23	3.36	0.8723	261-140-107
6.00	88	20	3.60	0.8723	261-150-107
6.40	84	17	3.84	0.8723	261-160-107
6.80	76	16	4.08	0.9394	261-170-107
7.00	74	15	4.20	0.9394	261-175-107
7.20	69	14	4.32	0.9394	261-180-107
8.00	59	11	4.80	1.0736	261-200-107
8.60	51	10	6.04	1.2078	261-215-107
9.00	46	9	6.32	1.3420	261-225-107
10.00	40	7	7.00	1.4091	261-250-107
11.00	32	6	7.72	1.5433	261-275-107
12.00	28	5	8.40	1.6104	261-300-107
12.60	25	4	8.84	1.7446	261-315-107
13.00	24	4	9.12	1.8788	261-325-107
14.00	23	4	9.80	2.2143	261-350-107
15.00	20	3	10.52	2.3485	261-375-107
16.00	19	3	11.20	2.5498	261-400-107
18.00	18	2	14.40	2.8182	261-450-107
20.00	17	2	16.00	3.1537	261-500-107
22.00	17	2	17.60	3.5563	261-550-107
24.00	16	1	19.20	3.9589	261-600-107
28.00	12	1	22.40	4.6299	261-700-107
32.00	9	1	25.60	5.0996	261-800-107
36.00	6	1	28.80	5.5022	261-900-107

*Referring to the inner side of the elbow of hose.
 The above mentioned data refers to an average and ambient temperature of 68° F. Subject to technical changes and color variations. Please refer to technical data sheet when selecting hose.

Standard Production

- Diameter: 2.6" to 36"
- Color: black
- Standard lengths: 25'

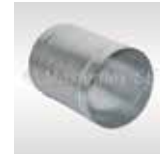
Available on Request

- Special lengths up to 50'
- Custom design with other pitches and helix sizes
- External helix also in stainless steel
- Special diameters metric

Installation and connection possibilities



Clip-Grip special hose clamp



Hose connector



Hose reducer, symmetrical