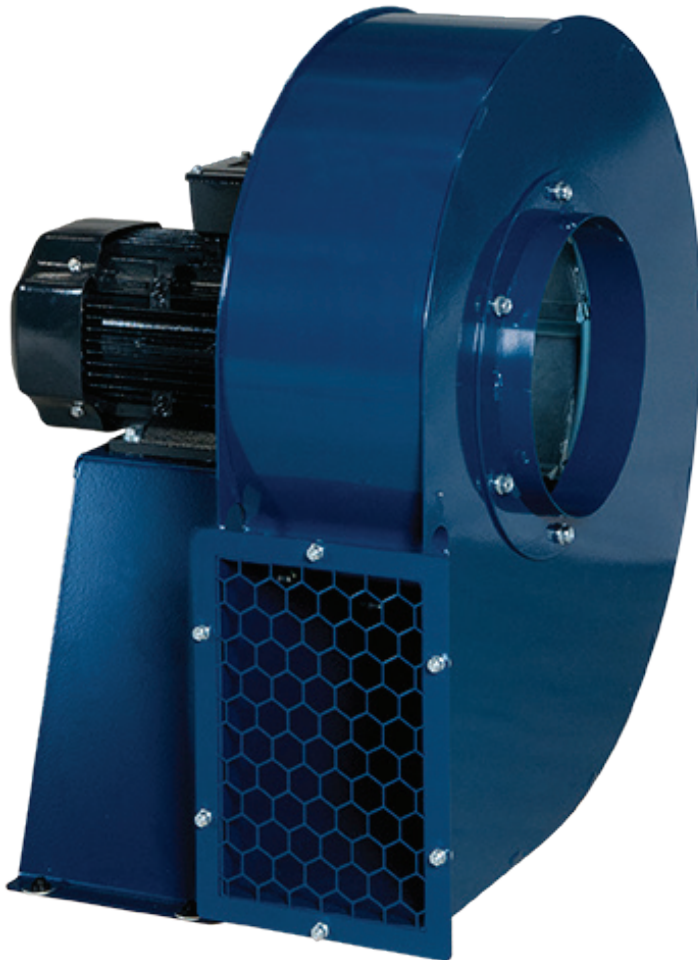


# MOVEX®

## FB

*A focus on performance and design gives the FB many benefits*



The Movex FB represents a range of radial fans for the extraction of gases, smoke and small particles. For airflows ranging from from 200 to 8000 cfm

The impeller with it's curved blades is manufactured from welded sheet steel and is electro-galvanized as standard.

The fans are optimized for use together with the Movex product range for local extraction in industrial environments and vehicle workshops.

There are a number of accessories available for the FB range to make installation and use easier and more efficient.

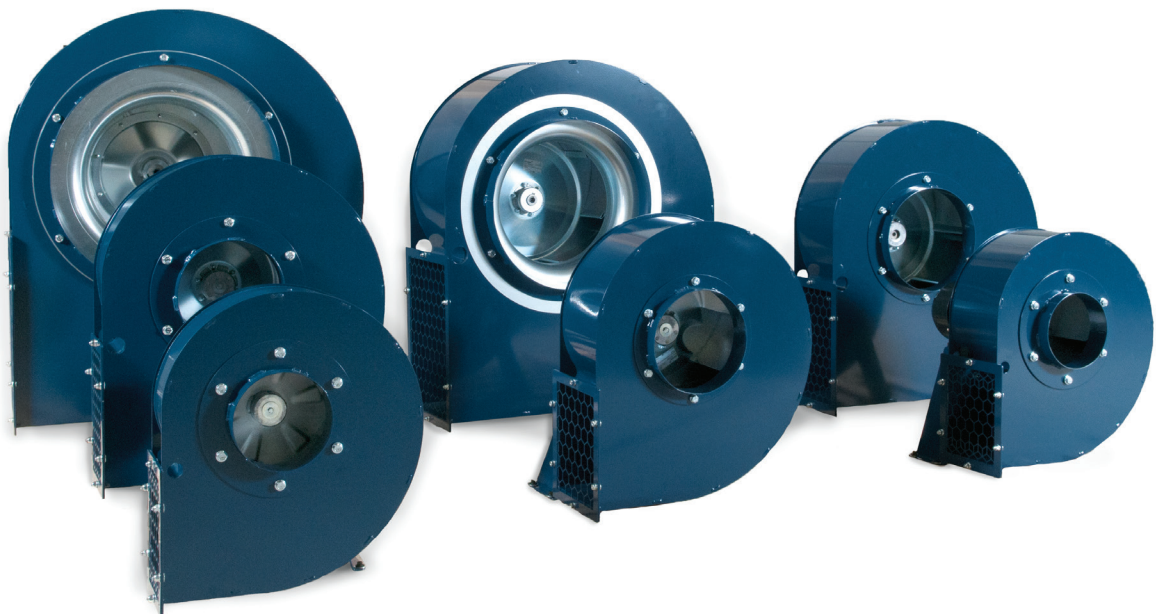
*The Movex range also includes local extraction, accessories, automatic controls and filters compatible with the fans.*

FANS  
Pure benefits

**Motor data**

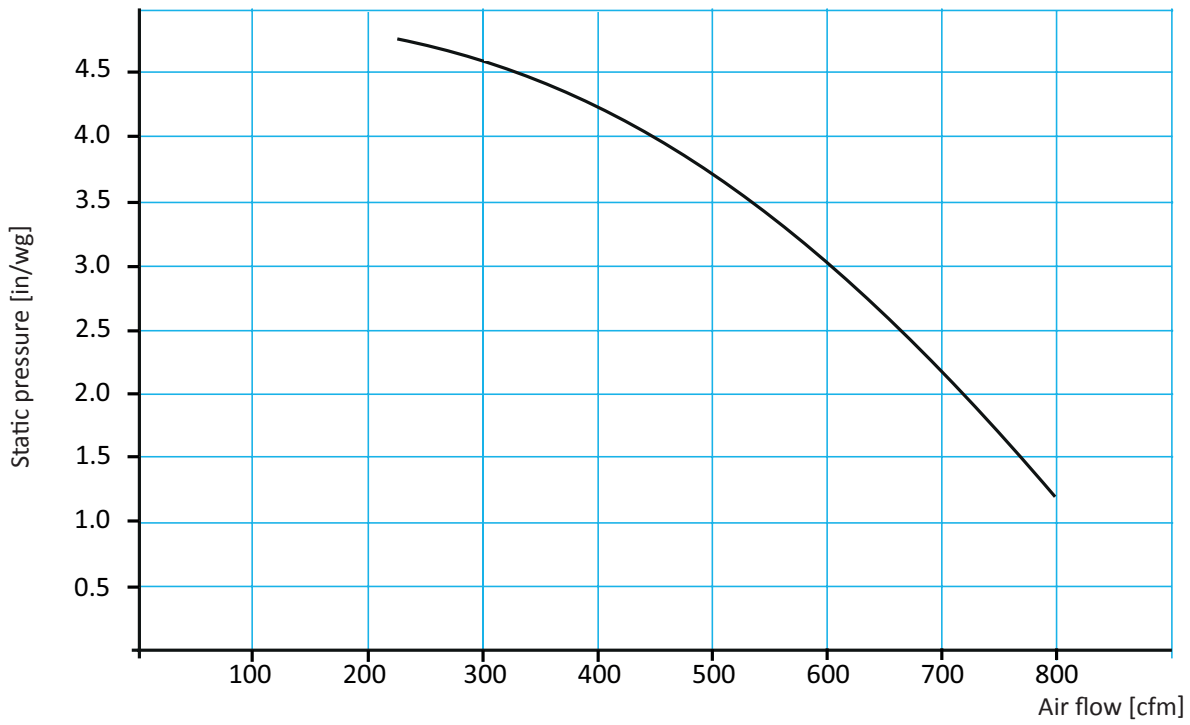
Designation	Nominal speed (rpm)	Rated power (hp)	Rated current A			Voltage V
			3-phase			
			208V	230V	460V	
FB 076-3	3440	0.7	2.45	2.20	1.10	208/230/460
FB 106-3	3360	1.0	4.10	3.70	1.85	208/230/460
FB 206-3	3470	2.0	6.20	5.60	2.80	208/230/460
FB 406	3350	4.0	11.7	10.6	5.3	208/230/460
FB 706	3535	7.0	19.4	17.6	8.80	208/230/460
FB 1506	3550	15.0	38.9	35.2	17.6	208/230/460

Designation	Nominal speed (rpm)	Rated power (hp)	Rated current	Voltage V
			A	
			1-phase 115V	
FB 076-1	3340	0.7	7.2	115
FB 106-1	3360	1.0	10	115
FB 206-1	3360	2.0	20	115

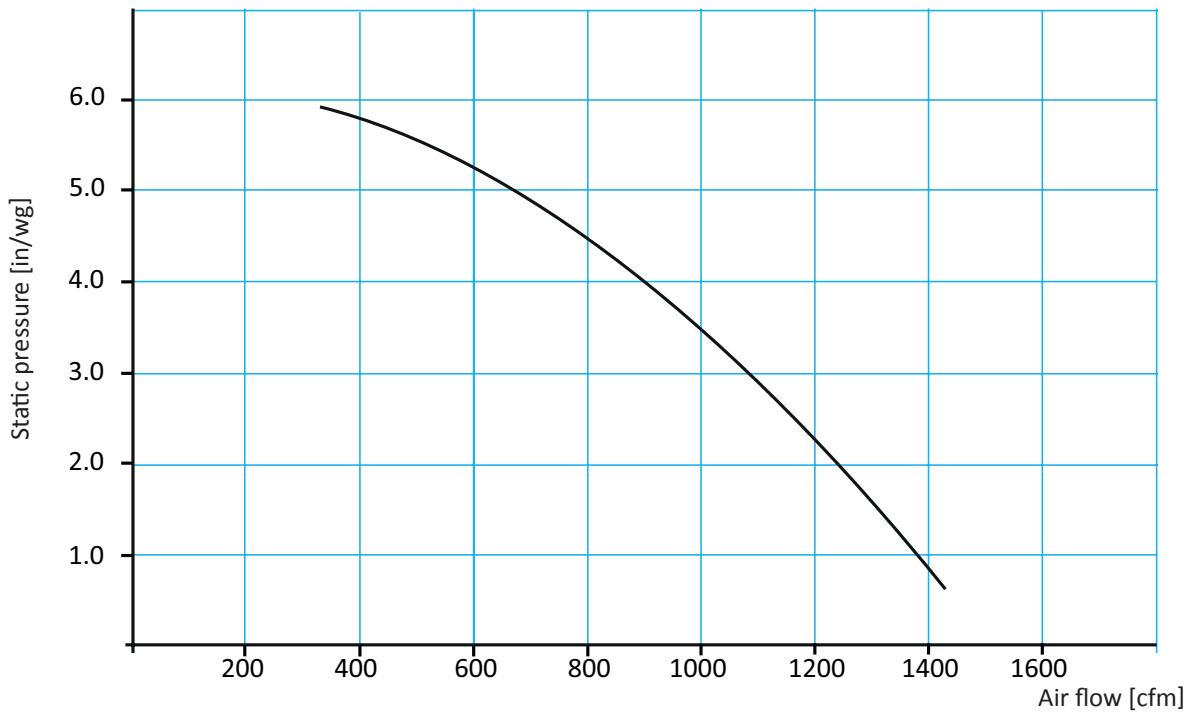


## Fan performance

### FB 076

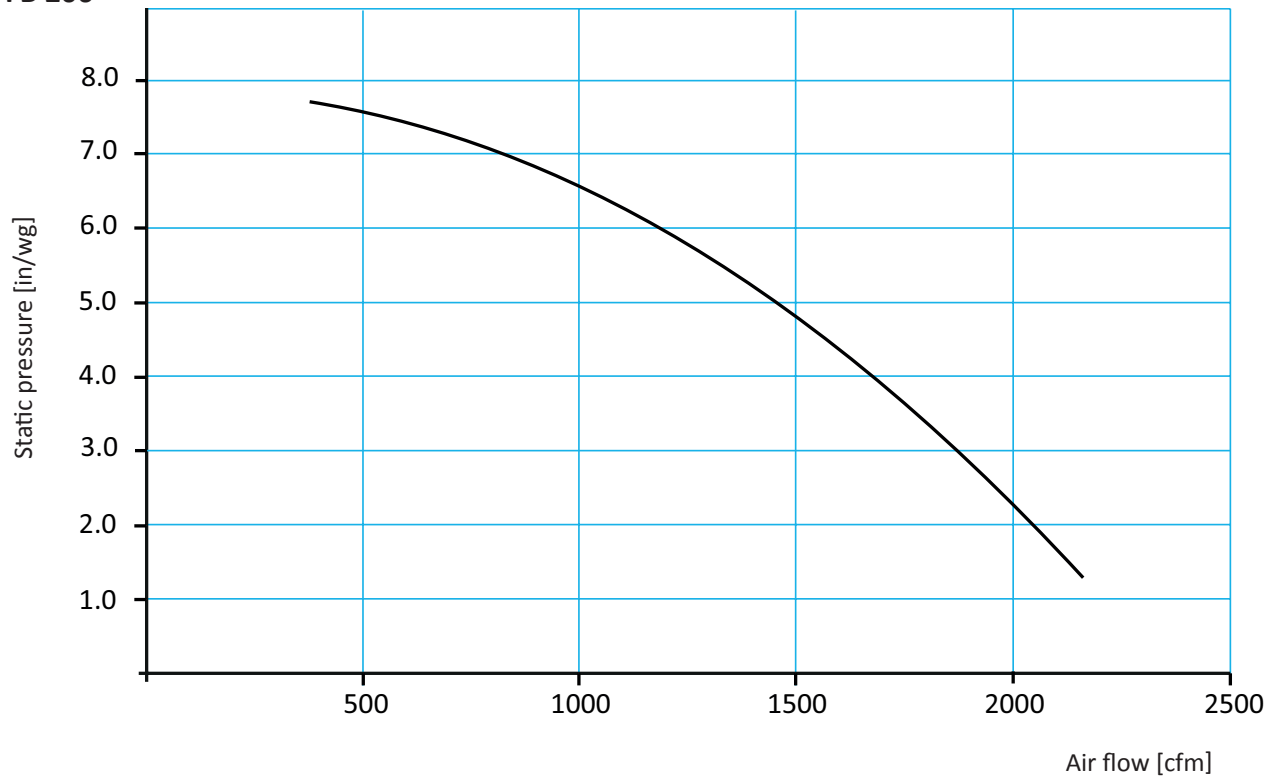


### FB 106

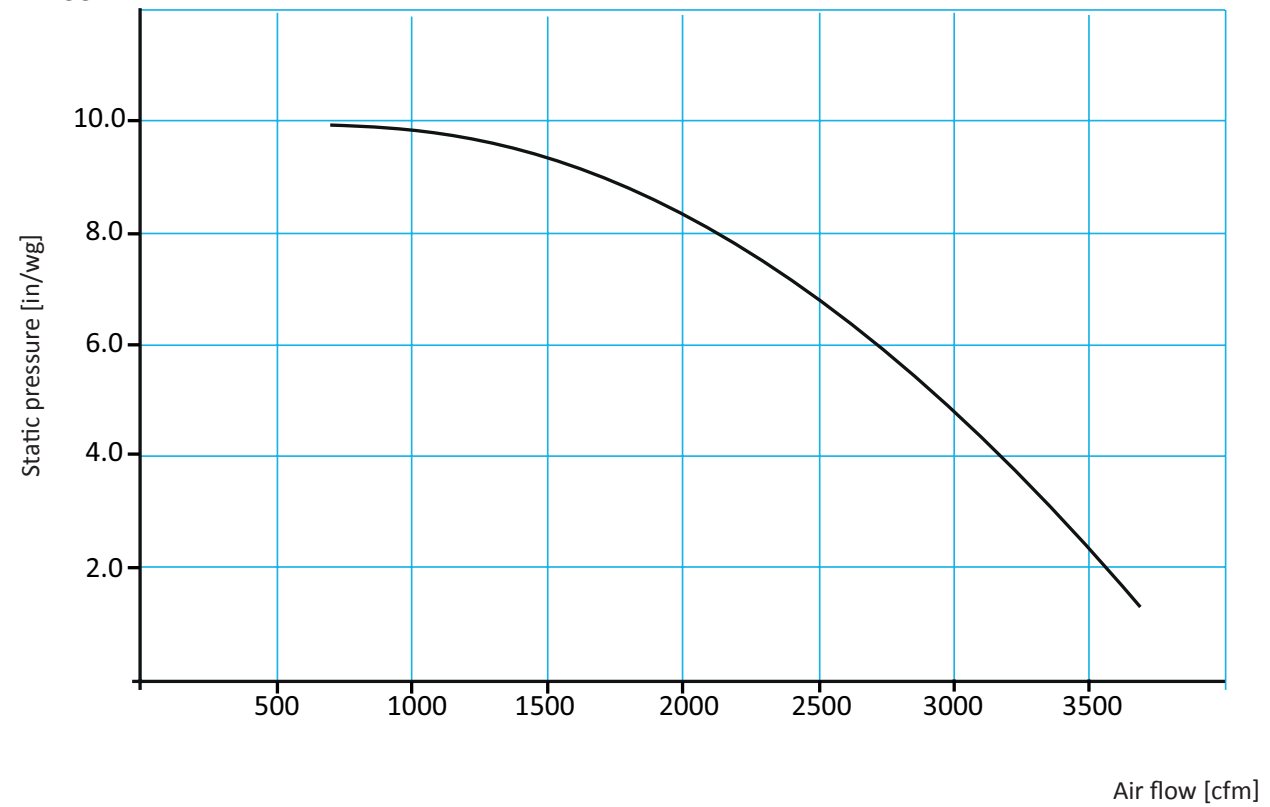


## Fan performance

### FB 206

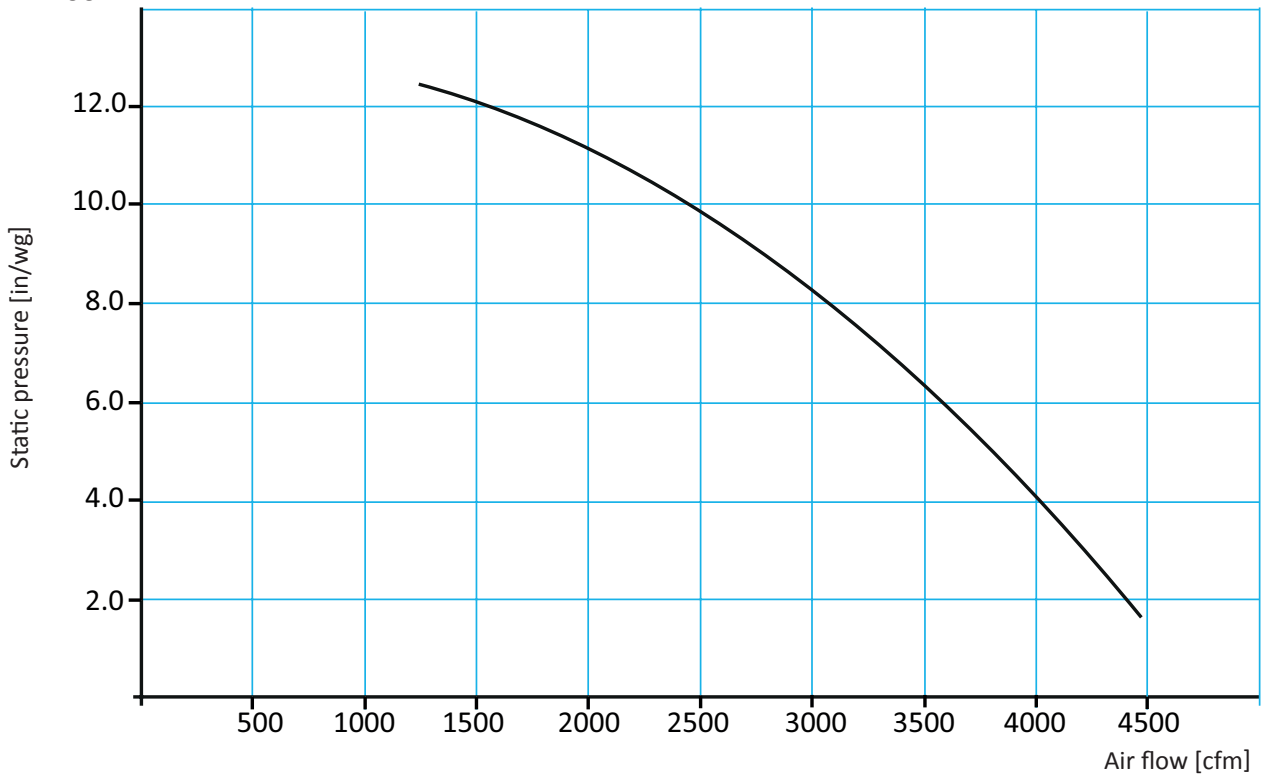


### FB 406

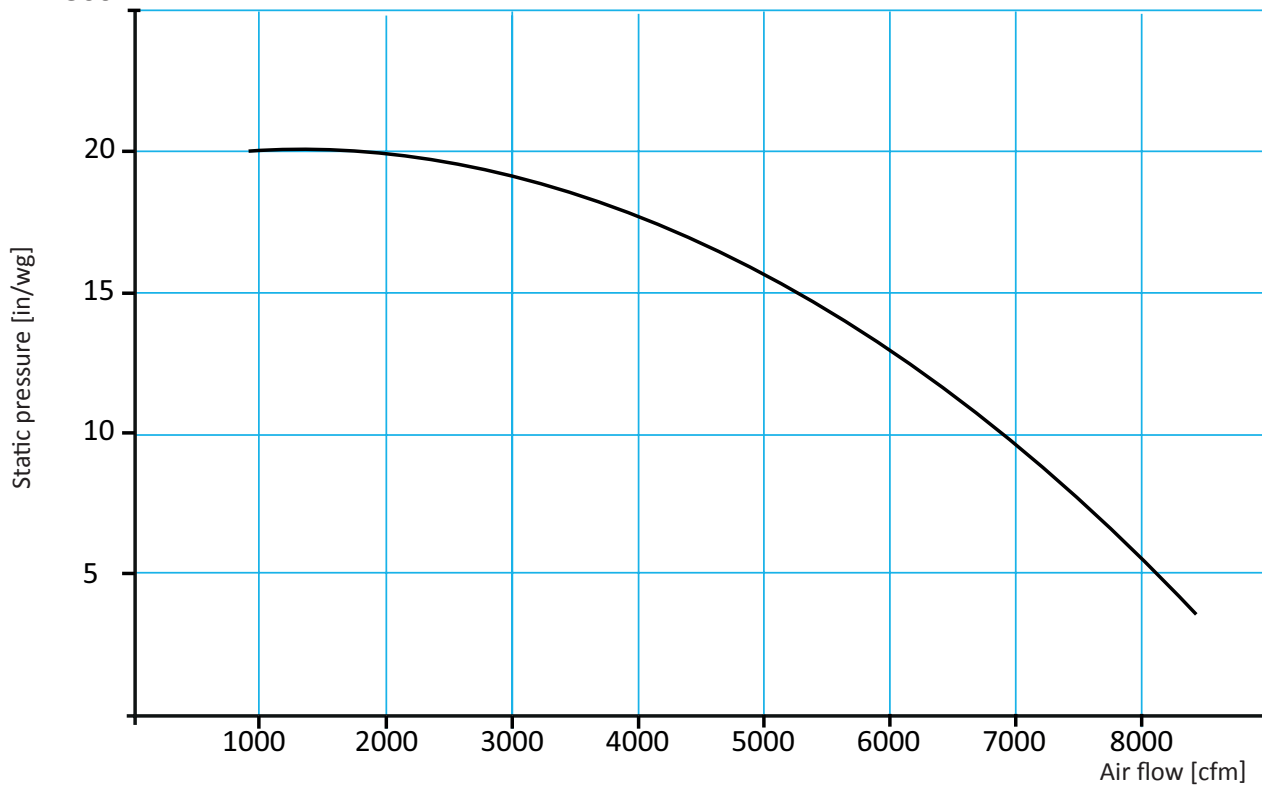


## Fan performance

### FB 706



### FB 1506



# MOVEX® FB

---

## **Fan housing**

Manufactured in powder-coated sheet steel as standard.

## **Impeller**

The impeller with curved blades is manufactured in welded sheet steel, and is electro-galvanized as standard.

## **Motor**

3-phase or 1-phase asynchronous motor. Protection class IP 55.

## **Production**

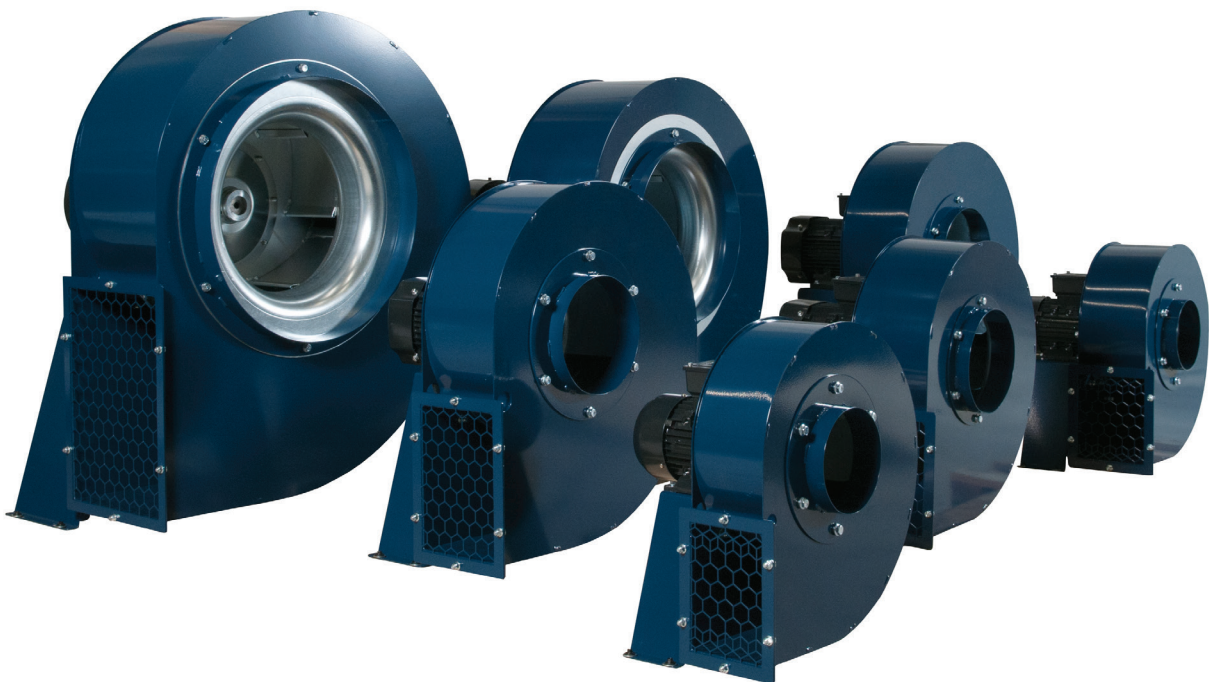
The FB range of fans is manufactured in accordance with the following standards in the Machinery Directive: SS-EN 60335-2-65, 60335-2-80 & 60335-1.

## **Additional information**

The operating temperature for the fan is a maximum air temperature of 176°F and a maximum ambient temperature of 104°F.

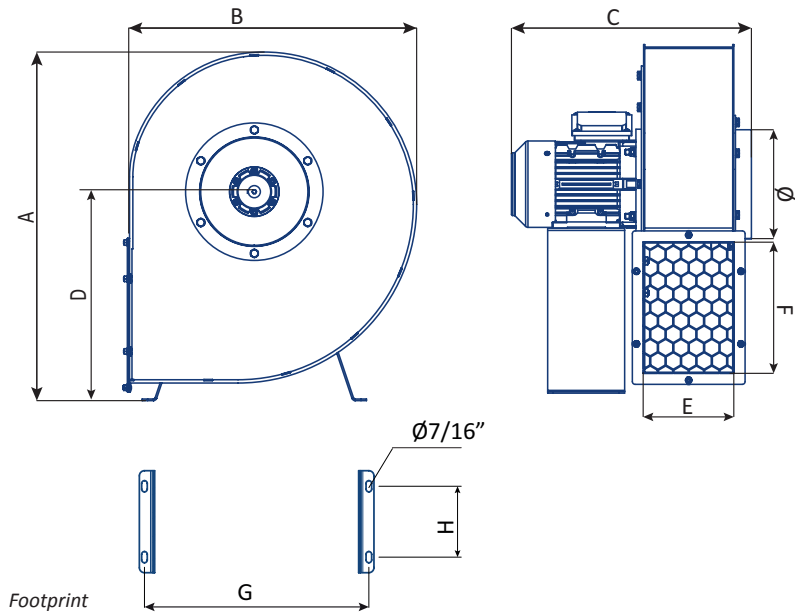
## **Accessories**

The Movex product range also includes contactors and manually operated protective motor switches. The Movex SFC frequency converter is used for speed control, and this can be combined with the ST 300 pressure regulator for economic operation (see controls product sheet for automatic control).

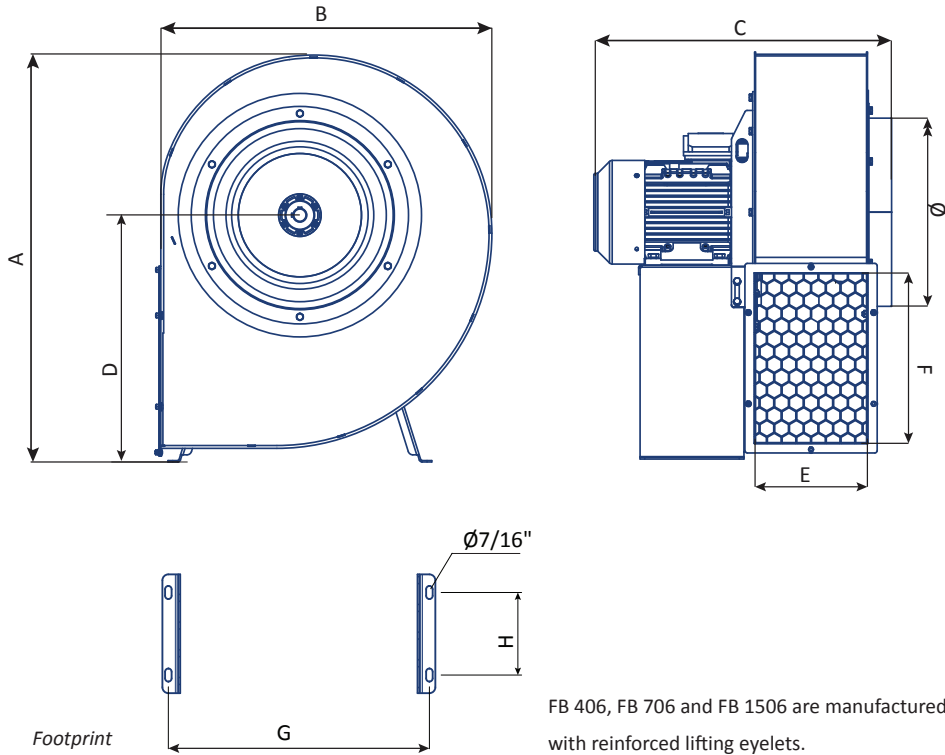


# MOVEX® FB

FB 076  
FB 106  
FB 206



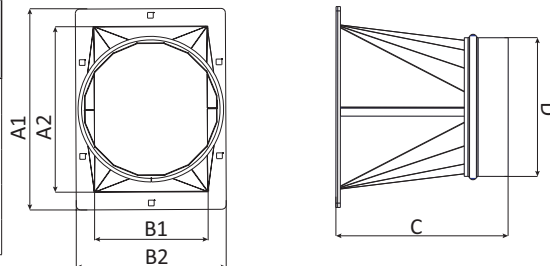
FB 406  
FB 706  
FB 1506



Designation	Dimensions (inch)									Total weight lb
	A	B	C	D	E	F	G	H	Ø	
FB 076	20	16 <sup>15/16</sup>	15 <sup>13/16</sup>	12 <sup>1/16</sup>	5 <sup>3/16</sup>	7 <sup>7/16</sup>	12 <sup>11/16</sup>	3 <sup>9/16</sup>	6 <sup>12/64</sup>	49
FB 106	22 <sup>5/16</sup>	18 <sup>15/16</sup>	18 <sup>5/8</sup>	13 <sup>3/8</sup>	6 <sup>5/8</sup>	8 <sup>3/8</sup>	13 <sup>7/8</sup>	3 <sup>7/64</sup>	9 <sup>27/32</sup>	66
FB 206	27 <sup>13/16</sup>	23 <sup>3/4</sup>	21 <sup>1/8</sup>	16 <sup>5/8</sup>	7 <sup>3/32</sup>	10 <sup>2/3</sup>	17 <sup>21/64</sup>	5 <sup>1/2</sup>	12 <sup>13/32</sup>	101
FB 406	34 <sup>7/32</sup>	28 <sup>1/4</sup>	24 <sup>7/16</sup>	20 <sup>7/8</sup>	9 <sup>7/16</sup>	15	21 <sup>1/5</sup>	5 <sup>1/2</sup>	13 <sup>1/2</sup>	150
FB 706	34 <sup>5/16</sup>	28 <sup>1/4</sup>	27 <sup>9/16</sup>	20 <sup>15/16</sup>	9 <sup>7/16</sup>	15	23 <sup>1/2</sup>	7	15 <sup>3/4</sup>	227
FB 1506	38 <sup>11/16</sup>	31 <sup>1/4</sup>	33 <sup>3/32</sup>	23 <sup>7/8</sup>	12	15 <sup>4/5</sup>	26 <sup>5/8</sup>	8 <sup>7/16</sup>	19 <sup>11/16</sup>	377

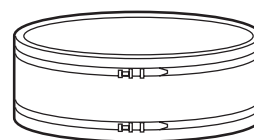
**FBO**, Transition coupling from rectangular to round connection mounted on the fan's outlet.

Designation	Compatible with	A1	A2	B1	B2	C	D
FBO 037	FB 076	9	7 <sup>7/16</sup>	5 <sup>1/8</sup>	6 <sup>3/4</sup>	7 <sup>5/8</sup>	6 <sup>1/4</sup>
FBO 075	FB 106	8 <sup>3/8</sup>	9 <sup>15/16</sup>	6 <sup>9/16</sup>	8 <sup>3/16</sup>	9 <sup>5/8</sup>	7 <sup>13/16</sup>
FBO 220	FB 206	10 <sup>11/16</sup>	12 <sup>1/4</sup>	7 <sup>1/16</sup>	8 <sup>11/16</sup>	10	9 <sup>3/4</sup>
FBO 400	FB 406 & 706	14 <sup>3/16</sup>	15 <sup>13/16</sup>	9 <sup>7/16</sup>	11	13 <sup>9/16</sup>	15 <sup>11/16</sup>
FBO 750	FB 1506	15 <sup>13/16</sup>	17 <sup>3/8</sup>	11 <sup>1/8</sup>	12 <sup>11/16</sup>	17 <sup>1/2</sup>	19 <sup>5/8</sup>



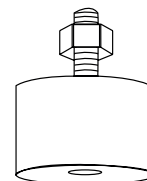
**FBD**, Flexible connector to the fan's intake, side, includes 2 assembly clamps.

- FBD 055 is compatible with FB 076.  $\varnothing 6^{5/16}$  inch
- FBD 110 is compatible with FB 106  $\varnothing 7^{7/8}$  inch
- FBD 220 is compatible with FB 206.  $\varnothing 9^{13/16}$  inch
- FBD 400 is compatible with FB 406 and FB 706  $\varnothing 15^{3/4}$  inch
- FBD 750 is compatible with FB 1506.  $\varnothing 19^{11/16}$  inch



**FBV**, Vibration damper kit, consisting of four vibration dampers manufactured in natural rubber with a hardness of 60° IRH. Designed to prevent the spread of vibrations.

- FBV 110 is compatible with FB 076-FB 206  $1^{9/16} \times 1^{3/16}$  inch / M8
- FBV 750 is compatible with FB 406-FB 1506  $1^{15/16} \times 1^{3/16}$  inch / M10



**SSB 750**, Safety switch with lockable lever. Supplied with 2 M25 entries.  $5^{7/16} \times 2^{1/2} \times 4^{5/8}$  inch

