

# MOVEX® ASE/ASEM

## *Manual and motor-driven exhaust hose reels for worksites with stationary vehicles*



The ASE (M) hose reel provides a handy solution for working with stationary vehicles, where you want to make the work area uncluttered or when the extractor is not being used.

The ASE has a spring return. For high ceilings and cases involving long hoses, the ASEM, a motor-driven hose reel, is available.

The product's lightweight construction of aluminum/steel plate makes it easy for it to be fitted to ceilings, walls or floors.

Hose reels are available in three different widths and are equipped as standard with an EPDM hose which can be reshaped, with dimensions of 3, 4, 5 or 5<sup>7/8</sup> inches.

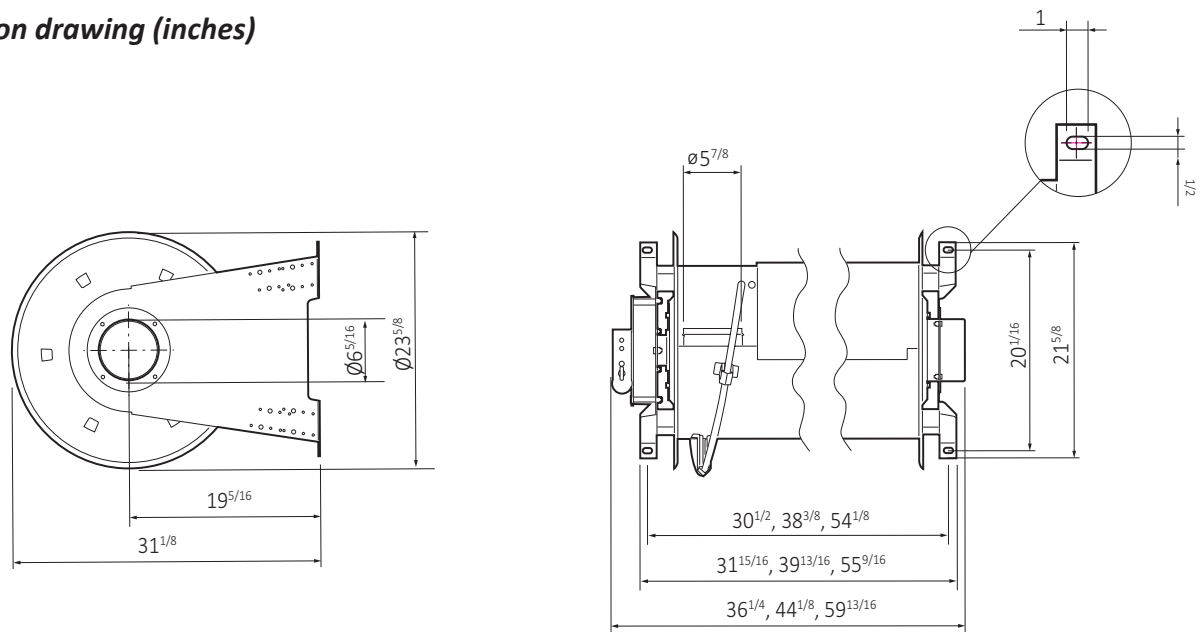
The hose reel system is connected to a separate fan or a central exhaust system.

*The Movex range also includes fans, accessories and automatic control gear  
suitable for exhaust extraction.*

---

EXHAUST EXTRACTION  
Pure advantages

## Dimension drawing (inches)



Designation		Ø  (inch)	Hose length  (feet)	Drop  (feet)
Manual return	Motorized return			
Dimension Ø3 inch				
ASE 65-75/5	ASEM 65-75/5	3	17	-
ASE 65-75/7.5	ASEM 65-75/7	3	25	-
ASE 65-75/10	ASEM 65-75/10	3	33	-
Dimension Ø4 inch				
ASE 65-100/5	ASEM 65-100/5	4	5	-
ASE 65-100/7.5	ASEM 65-100/7	4	25	-
ASE 65-100/10	ASEM 65-100/10	4	33	7
ASE 85-100/10	ASEM 85-100/10	4	33	-
Dimension Ø5 inch				
ASE 65-125/5	ASEM 65-125/5	5	5	-
ASE 65-125/7.5	ASEM 65-125/7	5	25	-
ASE 85-125/10	ASEM 85-125/10	5	33	-
ASE 85-125/12.5	ASEM 85-125/12	5	42	4
ASE 125-125/15	ASEM 125-125/15	5	50	-
Dimension Ø5 7/8 inch				
ASE 65-150/5	ASEM 65-150/5	5 7/8	17	-
ASE 85-150/7.5	ASEM 85-150/7	5 7/8	25	-
ASE 85-150/10	ASEM 85-150/10	5 7/8	33	5
ASE 125-150/10	ASEM 125-150/10	5 7/8	33	-
ASE 125-150/12.5	ASEM 125-150/12	5 7/8	42	-
ASE 125-150/15	ASEM 125-150/15	5 7/8	50	5

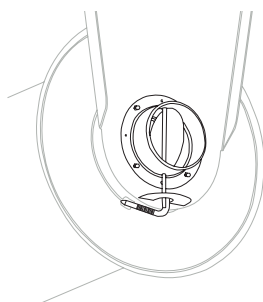
These values and calculations only apply when using a Movex original AG hose and Movex nozzle with a weight of 6 lb.

## Recommendation:

The recommended installation height for ASE is 9-13 feet; an extra spring assembly is required if installed any higher. Motor operation is always recommended when installing the reel at heights above 9-13 feet in combination with hose lengths over 32 feet.

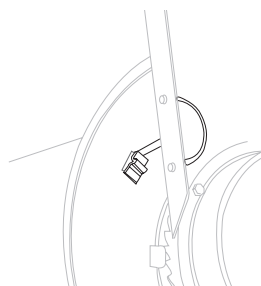


## Accessories



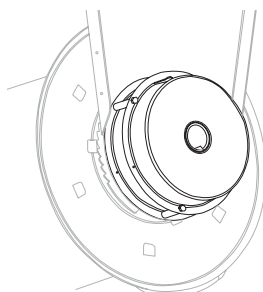
### ASES-160 Automatic damper

An automatic mechanical butterfly damper is fitted in the connection sleeve. The damper is activated by the hose reel's rotation - when the hose is extended the damper opens. When the hose is reeled in, the damper is closed. The damper has a clear indicator, showing whether the damper is open or closed. The ASES-160 is an energy-saving accessory which can be supplemented with fan pressure control to make the system more efficient. Fits: ASE/ASEM



### ASE 865 Switch for fan/electric damper control

An externally fitted switch is activated by the hose reel's rotation. Switch is used to automatically start/stop the fan and electric damper. A Movex S 600/S 400 control unit is used as the finishing touch to the system. See the separate product sheet on automatic control units for vehicle exhausts. Max 24 V supply voltage. Fits: ASE/ASEM



### ASEMS Extra spring assembly for manual hose reels

An additional spring assembly is equipped when additional lifting power is required, e.g. for long hoses, thick hoses/nozzles, and when hoses are fitted at a high height. Supplied complete with drive shaft. Weight: 17 lb Fits: ASE



### ASL-160

Hose, 7 inch with hose clips for connecting the hose reel and pipe. Fits: ASE/ASEM

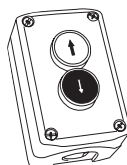
## ASEM control devices

A control device is used to reel the hose out and in easily and conveniently, while helping prevent work-related injuries.



### ASEM RADIO

Radio control set (transmitter/receiver). IP 55



### ASEM-1

Wall-mounted control device. IP 66



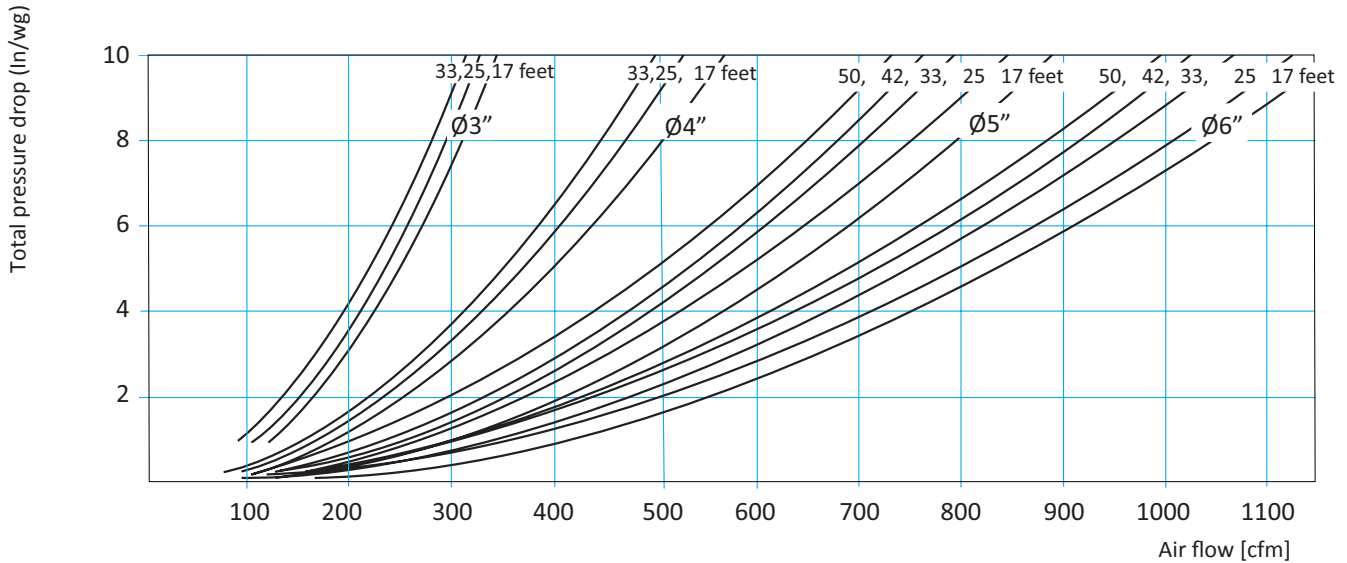
### ASEM-2

Hanging control device. IP 65

## Additional information

Information about suitable nozzles for Movex hose reels is available in a separate product sheet "Exhaust nozzles". Refer to the "Automatic control unit for exhausts" product sheet to find out the maximum energy savings and minimum noise level achievable.

Pressure drop (fully extended hose)



Recommended air flow rate for extraction in vehicle workshops

Activity	Air flow
Private cars	235 cfm
Trucks	590 cfm

This recommendation applies when the speed and engine load are low.

Specifications

**Form of delivery:**

Supplied complete with AG hose type.

**Surface treatment:**

Sheet metal parts - Powder-coated.

Aluminum parts - Anodized.

**AG hose type:**

EPDM with polyester coil, can be reshaped, temperature range -22°F – 340°F.

**Spring:**

Worm spring, spring steel DIN 1234.

**Motor (ASEM):**

390 W, 230 V, 50 Hz, IP 33.

**Weight:**

ASE 65, 85, 125 - 77, 82, 88 lb.

ASEM 65, 85, 125 - 73, 77, 84 lb.