



Cartridge Dust Collectors

Intercept™ PV-Series Vertical Cartridge Dust Collectors capture and remove most industrial and foundry dusts from exhaust system air. A unique CAM-LOC cartridge locking mechanism securely seals the cartridge header plate to the tube sheet to prevent dust bypass. A variety of system configurations are available to accommodate most space restrictions. Modules are available in one, two or three cartridge widths, and depths up to four cartridges.

Standard Features

- **Continuous Pulse Filter Cleaning**
Static pressure is monitored and the cartridge filters pulsed clean when necessary
- **All Welded Heavy Sheet Steel**
12 Gauge Steel will stand up to years of daily abuse
- **Filter Racking System**
Provides a tight and even seal between the filter and fan assembly
- **Vertically Mounted Filters**
Vertically mounted filters clean better when pulsed allowing gravity to settle particulate to the bottom of the dust collector.
- **Urethane Mastic External Coating**
Durethane DTM by PPG chemically resistant and extremely durable. Provides excellent corrosion resistance with superior color and gloss retention.
- **Welded Couplings**
1" NPT for fire control equipment.
- **Photohelic Switch / Gauge**
Mounted in a NEMA 12 control panel.

FILTRATION OPTIONS

FIRE RETARDANT NANO WEB

STANDARD

Protects from errant sparks making contact with the filter and causing a fire. Able to capture smoke and fumes with particle size down to .3 micron in size.

FIRE RETARDANT

Protects from errant sparks making contact with the filter and causing a fire. Efficient for grinding and sanding dusts > 3 micron.

NANO WEB

Nano Web filter cartridges are able to capture smoke and fumes with particle size down to .3 micron in size.

POLYESTER

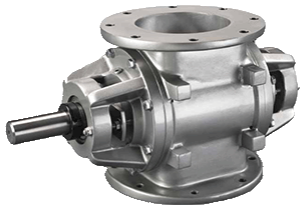
Polyester filters provide excellent filtration and are the most efficiently cleaned when pulsed.

Popular Options



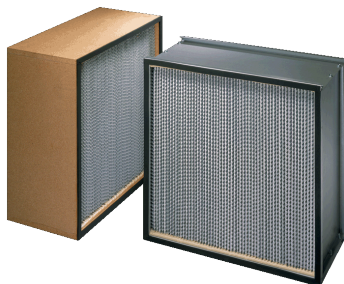
Explosion Vents are available on all Intercept PV dust collectors. Explosion Vents offer protection from unsafe pressure in dust collection systems

ProVent Silencers reduce the noise level produced by the exhausted air. ProVent manufactures silencers that are perfectly matched to the collectors they serve.



Rotary Air Lock Valves allow collected material to be continually moved from the hopper to a storage device without the interruption of air pressure.

NFPA requires that an explosion isolation device be installed on all suction side ducts that transport material with a KST value above zero.



If superior filtration is needed, a HEPA after-filter is available raising efficiencies to 99.999% down to .3 micron.

Total Air/Energy
SOLUTIONS
Technology • Efficiency • Performance



Sales@TotalAirEnergy.com

www.TotalAirEnergy.com

Phone 206.454.7070

Fax 206.892.9644

727 S. Kenyon St., Seattle, WA 98108

Specifications

Motor HP	3HP - 200HP
Intergral Fan	Customer Requirements
Voltage	Customer Requirements
Filter Cleaning	Enclosed time with differential pressure switch CE, UL Rated IP65 Protection Rating (NEMA 4) 115V, Single Phase, Solenoid Actuated Diaphragm Valves Directly Connected to Manifold
Compressed Air	Reverse Pulse, 80-90 PSI Required 1" NPT Female Coupling Air Inlet
Filters	NANO Web Fire Retardant cartridges, 95% efficient down to .3 micron particle size. 250 SQ. FT Per Filter
Filter Racking	Vertically Mounted Filters, Sealing Via Dual Rail "Single Push" CAM Locking Assembly
Fire Control	(2) 1" NPT Fittings Welded into Housing for the Connection of Fire Control Equipment
Housing Construction	7, 10, 12 Guage, 3/16" and 1/4" Plate Solid Welded
Hopper	14" x 14" Standard Hopper Outlet
External Coating	Durethane DTM By PPG is a Direct-To-Metal Urethane Mastic Coating that is Chemically Resistant and Extremely Durable.

staff@proventilation.com

P. 800-610-6010

Manufactured in Harbor Springs, Michigan



**Total Air/Energy
SOLUTIONS**
Technology • Efficiency • Performance



Sales@TotalAirEnergy.com

www.TotalAirEnergy.com

Phone 206.454.7070

Fax 206.892.9644

727 S. Kenyon St., Seattle, WA 98108