



## Down Draft Benches

The most efficient wet dust collectors on the market, the Uni-Wash series of wet dust collectors are capable of collecting dust down to 3 micron in size consuming only 3" wg. static pressure

Wet type dust collection is required for the safe collection of combustible metal dust. Wet Type Dust Collection has also been used effectively in many other difficult applications in place of cartridge collectors. ProVent's unique scrub design has been an industry standard for over 40 years and continues to lead the industry in Wet Type Dust Collection efficiency.

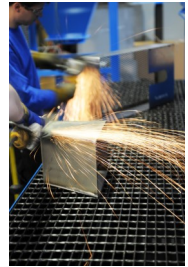
## Standard Features

- **Integral High Efficiency Fan Assemblies**
  - AMCA Rated, Integral Direct Drive Fan Assemblies with Keyless Concentric Bushings
- **Photohelic Gauge**
  - Measures differential pressure across the scrub to monitor airflow and water level.
- **10 Gauge Steel Construction**
  - Solid welded heavy steel for superior strength and longevity.
- **Stainless Steel Scrub Components**
  - Superior construction where it is needed the most.
- **2-Part Epoxy Internal Tank Coating**
  - AmeriLock-2 by Ameron provides exceptional corrosion protection in harsh industrial and marine corrosive environments.
- **Urethane Mastic External Coating**
  - Durethane DTM by PPG chemically resistant and extremely durable. Provides excellent corrosion resistance and has superior color and gloss retention.
- **99% Efficient utilizing only 3" wg**
  - The most efficient wet dust collector available which has become an industry standard over the past 40 years.

## COMBUSTIBLE METALS

**ProVent's line of Uni-Wash Wet Type Downdraft Bench Dust Collectors meets or exceeds NFPA #484 for combustible metals including:**

- Aluminum Dust
- Titanium Dust
- Magnesium Dust
- Zirconium Dust
- Tantalum Dust



## BEYOND COMBUSTIBLE METALS

### FOOD PROCESSING

ProVent has provided the food industry and others with 100% 304 Stainless Steel Wet Type Dust Collectors for the collection of a variety of airborne contaminants. If you think your application might benefit from the best designed, most efficient wet type dust collector on the market, look to ProVent and water filtration.

### PHARMACUTICAL

Utilizing water as a filtration device for pharmaceutical and biochemical dusts has its benefits. Beyond the cost savings of not having to replace filter cartridges, employee exposure to potentially hazardous dust during this maintenance operation is relieved.

Manufactured in Harbor Springs, Michigan

**Total Air/Energy  
SOLUTIONS**  
Technology • Efficiency • Performance



Sales@TotalAirEnergy.com

www.TotalAirEnergy.com

Phone 206.454.7070

Fax 206.892.9644

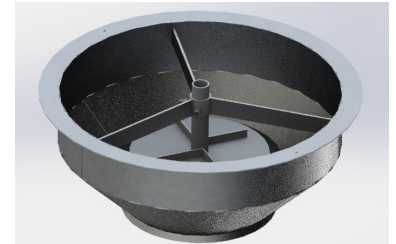
727 S. Kenyon St., Seattle, WA 98108

# Uni-Wash—The Industry's Leading Scrub Technology

The Uni-Wash scrub technology has been continually manufactured for over 40 years. This tried and true orifice / impingement technology offers many benefits unmatched by other manufactures of wet type dust collection. Utilizing airflow to produce the scrub means that there are no pumps or nozzles to clog. Additionally, this makes our wet type dust collectors more energy efficient than other designs.

The stainless steel components of the Uni-Wash scrub are designed with a large opening that will never clog and can be cleaned effectively reducing maintenance costs. The use of the optional Sani-Ball cleaning system reduces maintenance even further.

Efficiencies of up to 99% can be reached due to the incredible turbulence created by the Uni-Wash scrub. In this turbulence, a high rate of particulate to water contact is made increasing the efficiency while consuming a mere 3" wg.



## A WORD ABOUT NFPA 484

NFPA 9.4.12.6.1 "The power supply to the dust-producing equipment shall be interlocked with the airflow from the exhaust blower and the liquid-level controller of the collector so that improper functioning of the dust-collection system will shut down the equipment it serves.."

**ProVent Delivers:** Both water level and motor controls are integrated into a single, custom control panel which includes a transformer and disconnect features.

The NFPA Safety Package option integrates airflow monitoring, audio/visual alarms, a positive vent fan and auxiliary contact into the control panel. The auxiliary contact provides the customer the ability to connect the dust producing equipment to the dust collector per NFPA guidelines



**Total Air/Energy  
SOLUTIONS**  
Technology • Efficiency • Performance



Sales@TotalAirEnergy.com

www.TotalAirEnergy.com

Phone 206.454.7070

Fax 206.892.9644

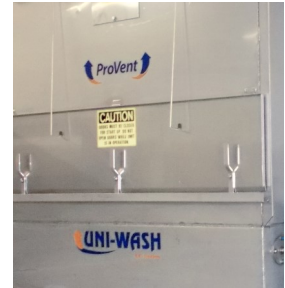
727 S. Kenyon St., Seattle, WA 98108

## Popular Options



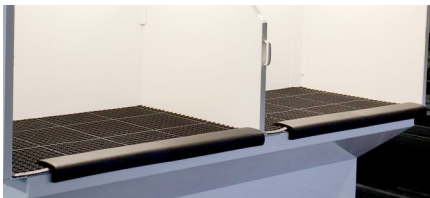
The NFPA package enables customers to fully comply with NFPA 484 guidelines for combustible metals such as aluminum, titanium, magnesium and others. By strictly adhering to NFPA guidelines, our wet dust collectors provide for shutting down the collector AND the dust producing equipment via control panel interlock on water level and airflow warnings.

All ProVent equipment is available in painted or unpainted stainless steel. Popular with the food processing industry, stainless steel provides cleanliness and longevity to the equipment.



Custom side and ceiling panels along with optional flush mounted lighting in the ceiling and side panels.

The Sani-Ball cleaning system uses powerful 316 stainless steel spray nozzles to simplify and improve the cleaning process.



Padded arm rests create a comfortable working environment.

ProVent Silencers reduce the noise level produced by the exhausted air.



Other options include custom deck materials, integrated footrests, crane slots in ceiling panel.

**Total Air/Energy  
SOLUTIONS**  
Technology • Efficiency • Performance



Sales@TotalAirEnergy.com

www.TotalAirEnergy.com

Phone 206.454.7070

Fax 206.892.9644

727 S. Kenyon St., Seattle, WA 98108

## Specifications

	DDB-10	DDB-20	DDB-25	DDB-30	DDB-40	DDB-50	DDB-60	DDB-75	DDB-100	DDB-125
Volume / CFM	1,000	2,000	2,500	3,000	4,000	5,000	6,000	7,500	10,000	12,500
Deck Velocity (Feet Per Minute)	378	407	400	378	369	416	369	416	416	416
Bench Width	26.75	34	37.5	40.75	65	72	97.5	108	144	180
Bench Depth	18	26	30	35	30	30	30	30	30	30
Bench Area (SQ FT)	3.34	6.14	7.81	9.9	13.54	15.00	20.31	22.5	30.00	37.50
Work Deck Height	30.125	30.125	30.125	30.125	36	36.125	36.125	36.125	36.125	36.125
Dry Weight	900	1200	1350	1550	2800	3100	3450	4300	4800	5300
Tank Capacity (US GAL)	55	100	125	133	280	330	420	495	660	825
Primary Volt-age	460Volt 3 Phase 60 Hertz									
Full Load Amps	1.8	3.4	4.8	4.8	7.6	7.6	11	11	21	(2) 11
Motor RPM	3450	3450	3450	1750	1750	1750	1750	1750	1750	1750
Motor HP	1	2	3	3	5	5	5	5	5	5
Fan Size	TEK250	TEK280	TEK315	182 BC74	182 BC	200 BC 91	200 BC	222 BC 83	245 BC 88	(2) 200 BC
Fan Type	Injection Molded GRP Polymide, Back-ward Curved Airfoil, AMCA Rated, Spark-Resistant Corrosion Proof, Stronger than Steel / Half the Weight / Lower HP			AMCA Rated Backward Curved, Single Width, Mild Steel						
Housing Con-struction	10 Gauge and 3/16" Steel, Solid Welded									
Work Deck Construction	1.5" x 1.5" square x 1.5" Tall Pattern, Molded Fiberglass, 65% Resin by Weight, Excellent Strength and Corrosion Resistance									
Work Deck Load Capacity (lbs)800	800	800	800	800	800	800	800	800	800	
Scrub Compo-nents	304 Stainless Steel									
Internal Tank Coating	AmerLock-2 by Ameron is a 2-Part Epoxy that provides exceptional corrosion protection in harsh industrial & marine corrosive environments									
Motor Con-trols	NEMA 12 Start / Stop Station with Overload Protection. Optional NFPA Package adds Horn / Light Alarm, Automatic Shutdown on Low Airflow and High / Low Water, adds Transformer, Photohelic, Disconnect, Auxiliary Connection for Interlock									
Water Level Controls	Mechanical Float Type									