

SUCTION AND TRANSPORT HOSE LIGHT/MEDIUM WEIGHT

Master-TPR PLUS

Material

Hose wall: thermoplastic elastomer fabric reinforced
Spiral: spring steel wire

Applications

- Dust collection on woodworking equipment
- Fume extraction/welding arm
- Drying/plastics equipment
- Air-conditioning/ventilation systems
- Light material handling
- Drain
- Robotic arm covers
- General purpose applications

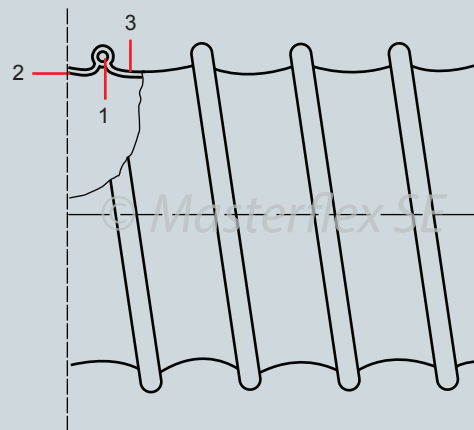
Properties

- Good chemical resistance to alkalis, acids and solvent gases
- Gas-tight
- Halogen/plasticizer-free
- Good UV/ozone resistance
- Extremely flexible
- Small bend radius
- Lightweight
- Smooth inside for optimum flow characteristics
- Electrically conductive by grounding spiral
- Good tear resistance
- Special wire colors available



Construction

1. Coated spring steel spiral
2. Hose wall: thermoplastic elastomer fabric reinforced
3. Wall thickness between spirals .030"



Temperature Range

- -60°F to +275°F
- Intermittent to +300°F

Chem. Resistance

See resistance table

Master-TPR PLUS

Dia (in.)	Positive (in. w.c.)	Negative (in. w.c.)	*Bending radius (in.)	Outer Dia (in.)	Weight (lbs./ft.)	Product Code
2.00	883	315	2.32	2.32	0.21350	363-050-107
2.50	602	274	2.92	2.92	0.28060	363-063-107
3.00	482	236	3.36	3.36	0.35990	363-075-107
3.50	361	157	3.96	3.96	0.42250	363-090-107
4.00	361	157	4.40	4.40	0.47580	363-100-107
4.50	321	138	4.96	4.96	0.49500	363-115-107
5.00	321	138	5.56	5.56	0.51590	363-125-107
6.00	241	118	6.44	6.44	0.63650	363-150-107
7.00	200	98	7.60	7.60	0.73700	363-175-107
8.00	200	79	8.56	8.56	1.12560	363-200-107
9.00	160	71	9.40	9.40	1.19260	363-225-107
10.00	160	64	10.40	10.40	1.25600	363-250-107
11.00	130	58	11.36	11.36	1.68885	363-275-107
12.00	120	49	12.40	12.40	1.84250	363-300-107
14.00	80	34	14.40	14.40	2.13730	363-350-107
16.00	70	20	16.40	16.40	2.44550	363-400-107

*Referring to the inner side of the elbow of hose.
 The above mentioned data refers to an average and ambient temperature of 68° F. Subject to technical changes and color variations.
 Please refer to technical data sheet when selecting hose.

Standard Production

- Diameter: 2" to 16"
- Color: black
- Standard lengths: 25'

Available on Request

- Special wire colors
- Special lengths up to 50'
- Special diameters metric

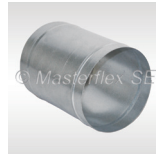
Installation and connection possibilities



Master-Grip hose clamp, screwable



Hose clamp with worm-gear drive



Hose connector



Hose reducer, symmetrical